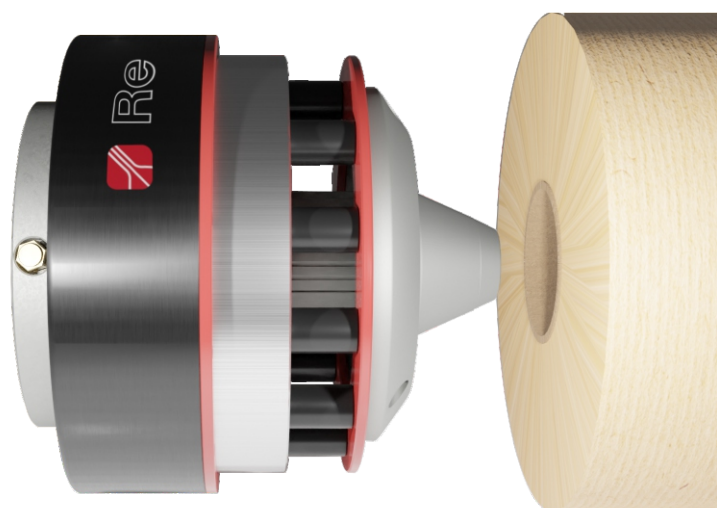


Remove rolls safely with

RotoMatic

chuck with pneumatic ejector



100% rolls ejected

also with damaged or deformed cores

Safe ejection

no manual operation needed

14.500 + 5.500N

thrust force

Safety valve

to avoid overpressure

Easy fitting

on any kind of roll stand

Core chuck ø	Max load	Torque
3"	18.000 N	1.150 Nm
100 mm	45.000 N	2.500 Nm
4"	45.000 N	2.500 Nm
5"	45.000 N	2.500 Nm
6"	45.000 N	2.500 Nm

Pneumatic ejector

Air supply	6 bar
First stage thrust force	14.500 N
Second stage thrust force	5.500 N
Material	Steel
Max stroke	82 mm
External ø	280 mm

RotoMatic is the new core chuck with pneumatic core ejector designed to cope with problems of tons of paper waste and difficult ejection of reel cores.

RotoMatic is made up of the high performance Rotogrip chuck and a patented pneumatic ejector to safely remove the 100% of rolls, even with damaged or deformed cores.

The two-stage telescopic ejector, concentric to the core chuck, ensure a thrust force of 14.500 N the first stage and of 5.500 N the second.

It is made of steel to guarantee sturdiness and it is equipped with a safety valve to avoid overpressure and damaging of the internal parts.

The pneumatic ejector is available for single diameter core chucks from 3" to 6" and can be installed on any kind of roll stand.



Re S.p.A.
via Firenze 3
20041 Bussero (MI) Italy

T +39 02 9524301
F +39 02 95038986
E info@re-spa.com

Technical support
T +39 02 952430.300
E support@re-spa.com

Sales support
T +39 02 952430.200
E sales@re-spa.com